

John Holland Gamuda Joint Venture
EPL Monthly Monitoring Report

Reporting Period: February 2025

Project	M1 Motorway Extension to Raymond Terrace – Black Hill to Tomago
Document No.	M1RTBH2T-JHGM-6003-EN-RPT-200050-EPL Monthly Monitoring Report - February 2025
Revision Date	25/03/2025

Document Approval

Rev	Date	Prepared by	Reviewed by	Approved by	Remarks
00					

Contents

1. Introduction.....	3
2. Environmental Protection Licence and Reporting Requirements.....	5
3. Water Monitoring	6
4. Noise Monitoring.....	6

Figures

Figure 1 M12RT Project Overview Northern Section.....	4
Figure 1 M12RT Project Overview Southern Section.....	4

Tables

Table 1 Sediment basin water quality monitoring results.....	6
Table 2 Noise monitoring results.....	7

1. Introduction

M12RT will extend the M1 Pacific Motorway from Black Hill to the Pacific Highway at Raymond Terrace,

about 15 kilometres, bypassing Beresfield, Hexham, and Heatherbrae (refer Figure 2-1). M12RT traverses the City of Newcastle and Port Stephens Council local government areas (LGAs). The suburbs of Beresfield, Tarro, Heatherbrae, and Raymond Terrace are located to the north of the Project, with Black Hill, Hexham and Tomago located to the south of the Project.

M12RT will provide a critical link in the National Land Transport Network, particularly for the coastal Sydney to Brisbane corridor. M12RT includes the following key features:

- Black Hill: connection to the M1 Pacific Motorway
- Tarro: connection and upgrade (six lanes) to the New England Highway between John Renshaw Drive and the existing Tarro interchange at Anderson Drive
- Tomago: connection to the Pacific Highway and Old Punt Road
- Raymond Terrace: connection to the Pacific Highway.
- A 2.6-kilometre viaduct over the Hunter River floodplain including new bridge crossings over the Hunter River, the Main North Rail Line, and the New England Highway
- Bridge structures over local waterways at Tarro and Raymond Terrace, and an overpass for Masonite Road in Heatherbrae
- Connections and modifications to the adjoining local road network
- Traffic management facilities and features
- Roadside furniture including safety barriers, signage, fauna fencing and crossings, and street lighting
- Adjustment of waterways, including at Purgatory Creek at Tarro and a tributary of Viney Creek
- Environmental management measures, including surface water quality control measures
- Adjustment, protection and/or relocation of existing utilities
- Walking and cycling considerations, allowing for existing and proposed cycleway route access
- Permanent and temporary property adjustments and property access refinements
- Construction activities, including establishment and use of temporary ancillary facilities, temporary access tracks, haul roads, batching plants, temporary wharves, soil treatment and environmental controls.

The M12RT delivery strategy includes construction via two collaborative Design and Construct (D&C)

contracts:

- A southern D&C contract (known as Black Hill to Tomago) to deliver the southern 10 kilometres of M12RT, with an interface located at Tomago
- A northern D&C contract (known as Heatherbrae Bypass) to deliver the northern 5 kilometres of M12RT.

The JHGA JV will deliver the southern contract. This report covers works for that southern contract package works.

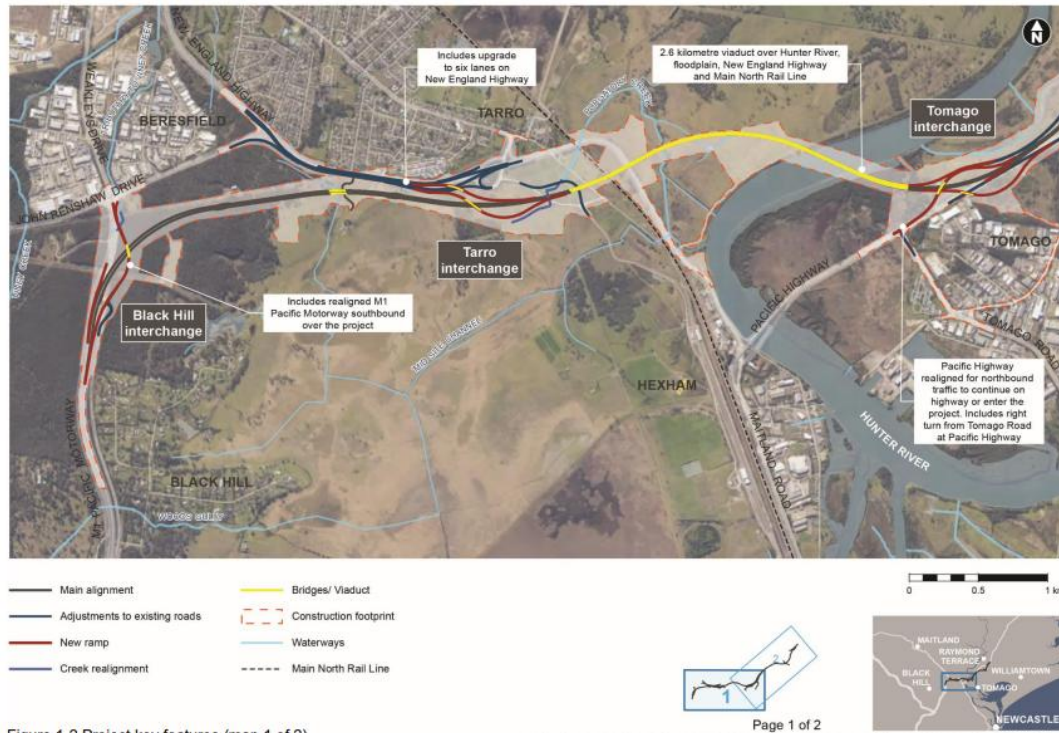


Figure 1 M12RT Project Overview – Southern Section (Source: M1 Pacific Motorway to Raymond Terrace EIS)

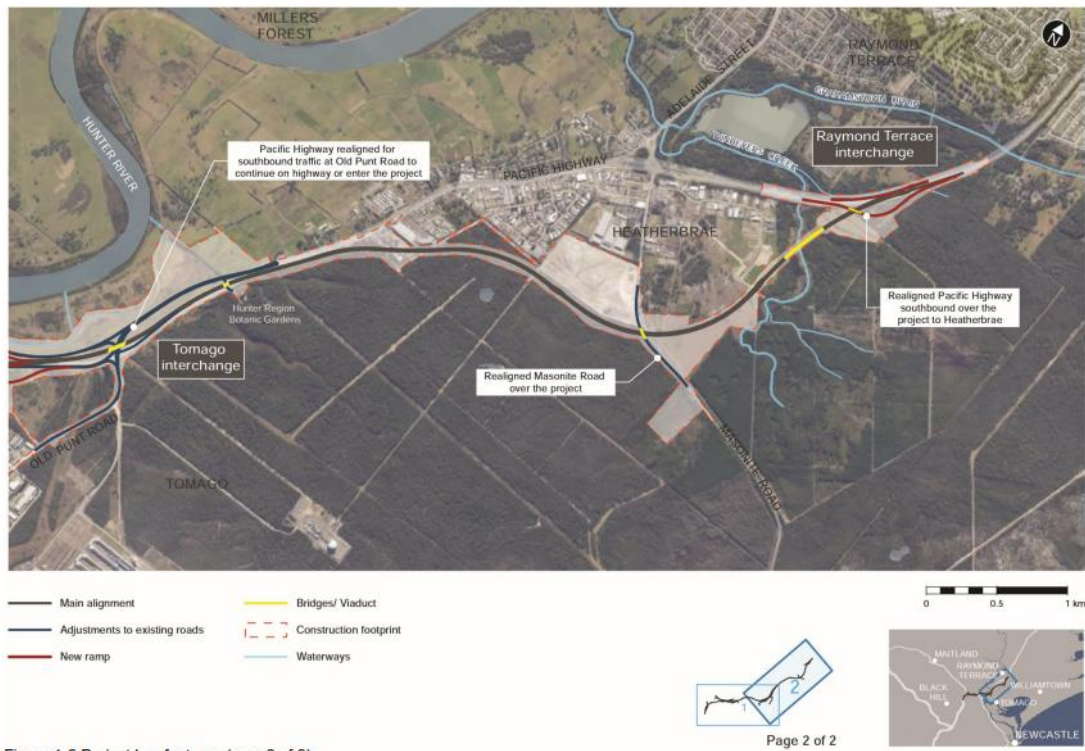


Figure 2 M12RT Project Overview – Northern Section (Source: M1 Pacific Motorway to Raymond Terrace EIS)

2. Environmental Protection Licence and Reporting Requirements

John Holland Gamuda JV obtained the Environment Protection Licence (EPL No. 21808) from the NSW Environment Protection Authority for the M1 Motorway Extension to Raymond Terrace – Black Hill to Tomago in September 2023. The licence is for construction works relating to Road Construction as defined under Schedule 1 of the *Protection of the Environment Operations Act, 1997* (POEO Act).

The licence describes monitoring and reporting requirements for construction works, and specifically as they relate to:

- Water discharge limits
- Noise limits

The following report details environmental monitoring undertaken during this reporting month conducted in accordance with the EPL.

The EPL can be found by following the link below to the EPA's website:

[ViewPOEOLicence.aspx \(nsw.gov.au\)](https://www.epa.nsw.gov.au/ViewPOEOLicence.aspx)

3. Water Monitoring

There was 214 mm rain recorded with the Project area during February 2025. The following discharge water quality monitoring results as per Condition M2.3 were recorded.

Table 1. Sediment basin water quality monitoring results

Sediment Basin Number	Discharge Point Number	Date	Water Quality Monitoring Result		
			pH	Turbidity (NTU)	Oil/Grease
3	BH2T_2	04/02/2025	7.23	39.6	No
1	BH2T_1	04/02/2025	7.17	20.5	No
1	BH2T_1	17/02/2025	7.24	8.3	No
1	BH2T_1	19/02/2024	7.1	20.8	No

4. Noise Monitoring

Noise monitoring was undertaken during the February 2025 reporting period. Construction noise monitoring results were above NML in most cases however due to background noise levels (heavy continuous traffic M1/New England Hwy/Pacific Hwy/Tomago Road) and inaudibility of construction noise at sensitive receivers were generally compliant during this period. Where the predicted noise level was exceeded, this was result of extraneous activities (traffic passing etc). Construction noise was in line with the predicted levels. Table 2 contains detailed noise monitoring results.

Table 2. Noise monitoring results

Monitoring Location (Noise Catchment Area, Street, Suburb)	Date	Time (24hr)	Attended or Continuous Monitoring	Parameter	Goal/Target dB(A)	Actual dB(A)	Comments
NCA01A 23 Cahill Cl, Black Hill	20/02/2025	08:12	Attended	Laeq 15 minute	61	57.60	Compliant - Heavy traffic noise on M1. No audible noise from site construction works.
NCA01B 24 Walter Pde, Black Hill	21/02/2025	08:18	Attended	Laeq 15 minute	47	56.80	Non-compliant. Residential activities such as the occasional car and lawn mowing. Noise from traffic on M1 but no audible noise from project.
NCA03 54 Weakleys Dr, Beresfield	21/02/2025	12:47	Attended	Laeq 15 minute	76	73.60	Compliant. Constant flow of traffic along Weakleys Dr. No audible noise from site construction works.
NCA04A 1/15 Quarter Sessions Rd, Tarro	21/02/2025	09:16	Attended	Laeq 15 minute	61	69.80	Non-compliant - Heavy traffic noise New England Highway. Truck and Dogs entering Gate 3 but noise was not audible due to constant traffic on New England Highway.
NCA04B 22 Lenox St, Beresfield	21/02/2025	11:13	Attended	Laeq 15 minute	55	51.40	Compliant – Swimming carnival on at Beresfield Pool, cars passing meter and audible noise from traffic on New England Highway. No audible noise from site

Monitoring Location (Noise Catchment Area, Street, Suburb)	Date	Time (24hr)	Attended or Continuous Monitoring	Parameter	Goal/Target dB(A)	Actual dB(A)	Comments
NCA05A 11 Anderson Dr, Tarro	21/02/2025	12:33	Attended	Laeq 15 minute	65	64.6	Compliant – Heavy traffic on New England Highway. Trucks and cars turning, braking and accelerating behind at a main intersection. No audible noise from site construction works.
NCA05B 49 Beresford Ave, Beresfield	21/02/2025	11:40	Attended	Laeq 15 minute	51	55.2	Non-compliant – Vehicle movements along Beresford Ave. No audible noise from site construction works.
NCA06 61 Redbill Dr, Woodberry	21/02/2025	10:33	Attended	Laeq15 minute	48	57.9	Non-compliant – Cars passing by and noise from traffic on New England Highway. No audible noise from construction.
NCA07 1 Woodlands Close, Tarro	21/02/2025	14:08	Attended	Laeq 15 minute	53	57.5	Non-compliant – Vehicle movements along New England Highway. Monitoring occurred 100m closer to construction works as to not disturb 1 Woodlands Cl resident. A car idling right in front of monitor. No audible noise from site construction works.

Monitoring Location (Noise Catchment Area, Street, Suburb)	Date	Time (24hr)	Attended or Continuous Monitoring	Parameter	Goal/Target dB(A)	Actual dB(A)	Comments
NCA08 213 Maitland Rd, Hexham	21/02/2025	15:49	Attended	Laeq 15 minute	51	76.00	Non-compliant – Vehicle movements along New England Highway. No audible noise from site construction works.
NCA09 838 Tomago Rd, Tomago	21/02/2025	15:15	Attended	Laeq 15 minute	62	71.20	Non-compliant – Constant traffic on Tomago Rd. Construction noise heard from excavator 50m away, but noise was under the Target dB
NCA14A 2137 - 2171 Pacific Highway, Heatherbrae	21/02/2025	14:42	Attended	Laeq 15 minute	64	65.70	Non-compliant – Vehicle movements along Pacific Highway. No audible noise from project.